



The Life Guide will address the below specifically identified, general, needs:

1. Support
2. Empowerment
3. Setting up boundaries and expectations
4. Constructive time management
5. Commitment to learning and developing
6. Positive values and ethics
7. Social competencies
8. Positive identity

These Life guides will be mentored on a weekly basis for in-depth life coaching and training. We believe that the model's success lies in this part of the strategy. Life guides are further equipped with life skills and tools to assist them in the rollout of their respective futures.

5.

The Scenario

The crisis that our youth is facing is not a new challenge and although the symptoms may vary the problem has remained the same for many generations. Many parents and guardians are absent because of work; many are absent out of choice and sadly, so many are absent because of tragic events, illness or incarceration.

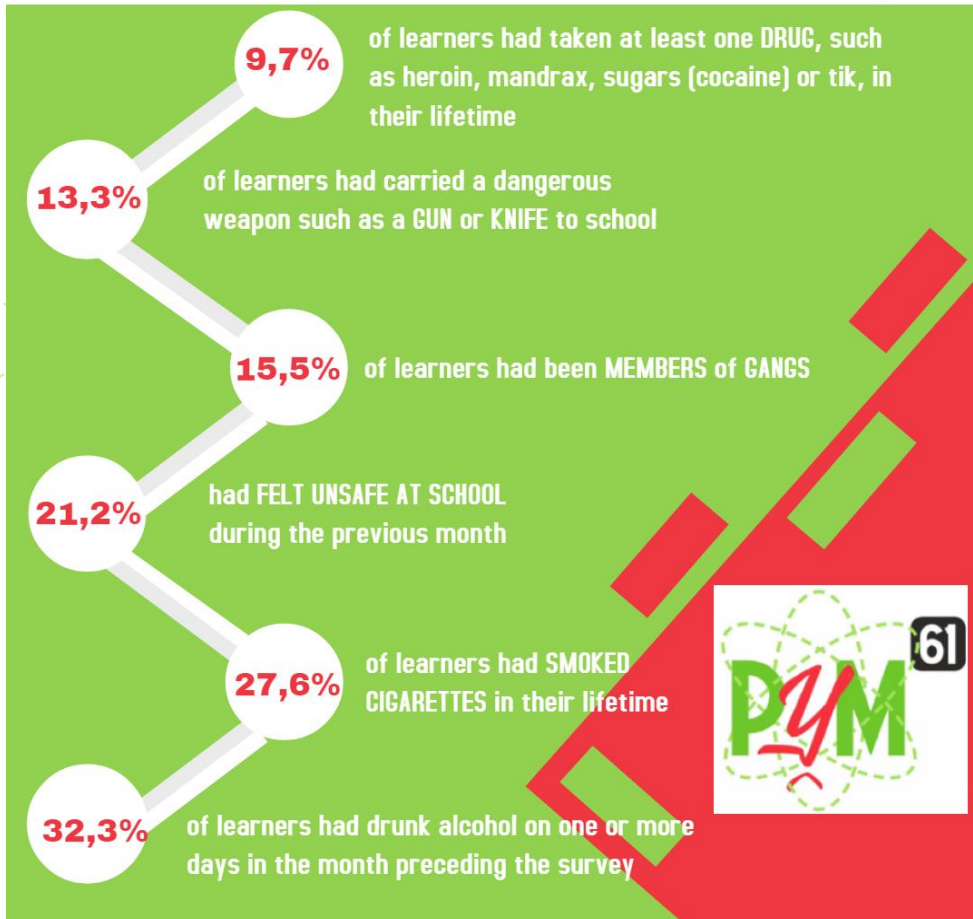
Western Cape is notorious for its high prevalence of gangs and resulting in gang violence. This area of South Africa further has elevated substance abuse statistics. Gangs and drugs are inextricably linked and often affecting innocent bystanders. This places a significant strain on the health, social welfare and defence sectors but most of all places the future of our youth in jeopardy by making learning and education near impossible in some areas.

Because of the high numbers of gangs and people involved in gangs many of our youths grow up with a negative role model in their lives leading to a large need in terms of raising children to understand a healthy and positive set of ethics and morals. This occurrence affects the quality of our youth's core beliefs and character negatively.

Although statistics are hard to come by, the following statistics, supplied by the Human Sciences Research Council (Umthente Uhlaba Usamila: the 3rd South African National Youth Risk Behaviour Schools Survey 2011), demonstrates the current reality at schools:



The 3rd South African National Youth Risk Behaviour Schools Survey 2011



The youth totals 25% of the population in the Drakenstein area. 32% of our youth aged 15-24 years are found to be unemployed and not in education or any form of training. It is thus clear that the potential of our youths is being missed and lives of crime, poverty and substance abuse are lurking.

We believe that our model can help to significantly reduce these numbers in our valley. These issues need to be addressed in some way, but the reality is that the school and community seem overwhelmed, overworked and under-equipped to tackle this enormous task.

PYM61 will, therefore, be placing Life Guides within the schools to capitalize on the opportunity of a captive audience as well as to strengthen the hands of the schools that have in, so many communities become a refuge and oasis for the youths and community. These Life Guides will position themselves as role models for the youths, but will also pursue opportunities to restore the lives of the adults that are involved at the school and community members that are willing be drawn into the possibility of a second chance.



"Young people are capable, when aroused, of bringing down the towers of oppression and raising the banners of freedom." Nelson Mandela

6.

Demographics

We need to understand the demographics for our strategy to be effective. The Drakenstein Municipality statistics conclude that the clear majority grouping within our area can be classified as Coloured, followed by Black and then White. The minorities are Indian/Asian and other racial groups. We have a large contingency of Afrikaans speaking people, followed by isiXhosa and then English. isiZulu and Sepedi also appear in very small percentage representation.

Cape Winelands District: At a Glance

